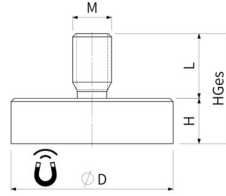


Flat pot magnets of Samarium-Cobalt (SmCo)

Flat pot magnets of SmCo, stainless steel body, with external thread, seal-welded, up to 350 °C



Article number	D mm	H mm	HGes mm	Thread MxL	Adhesive force* N	Weight g	Temperature °C
MS016SCAG06rh00	16 ^{+0.2} / _{-0.2}	7 ^{+0.2} / _{-0.2}	15	M6x8	6.5	12	350
MS020SCAG06rh01	20 ^{+0.2} / _{-0.2}	7,5 ^{+0.2} / _{-0.2}	17,5	M6x10	20	20	350
MS025SCAG06rh00	25 ^{+0.2} / _{-0.2}	7,5 ^{+0.2} / _{-0.2}	17,5	M6x10	30	30	350
MS032SCAG06rh00	32 ^{+0.2} / _{-0.2}	8 ^{+0.2} / _{-0.2}	18	M6x10	77	51	350

Application:

These magnetic systems are very well suited for permanent outdoor use. Short-term underwater use is also possible. When used in paint shops, they can be chemically or thermally cleaned. The systems withstand a high thermal load and therefore are usable as fittings on oven doors. The high quality of the stainless steel housing also allows the use in the production of dairy products.

PRODUCT INFORMATION:

Our magnetic systems with stainless steel housings are versatile due to their excellent properties. The completely closed and tightly welded stainless steel sleeve in quality 1.4404 is well resistant to corrosion, acids and alkalis. The SmCo magnetic core also has a temperature resistance of 350°C. The uniform threaded mount simplifies the changeover to the different dimensions.

As an alternative to our standard product we offer:

- » other thread sizes and thread lengths
- » cover in stainless steel 1.4301 or 1.4571

* The forces have been determined at room temperature on a polished plate made of steel (S235JR according to DIN 10 025) with a thickness of 10 mm (1kg~10N). A deviation of up to -10% from the specified value is possible in exceptional cases. In general, the value is exceeded. The type of application

(installation situation, temperatures, counter anchors, etc.) sometimes influence the forces enormously. The values given are for orientation purposes.

Let our experts advise you.