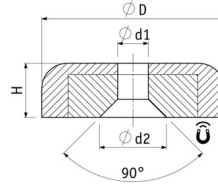
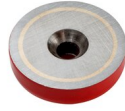


Flat pot magnets of Aluminum-nickel-cobalt (AlNiCo)

Flat pot magnets of AlNiCo, steel body, with bore and counter bore, red laquered



Article number	D mm	d mm	d1 mm	H mm	Adhesive force* N	Weight g	Temperature °C	Surface
F19R	19.1 ^{+0.5} / _{-0.5}	3,7	8,7	7,5 ^{+0.3} / _{-0.3}	30	17	180	rot lackiert
F29R	28.6 ⁺¹ / ₋₁	4,8	10,5	8,5 ^{+0.5} / _{-0.5}	40	43	180	rot lackiert
F38R	38.1 ⁺¹ / ₋₁	4,8	10,5	10,4 ^{+0.3} / _{-0.3}	80	82	180	rot lackiert

* The forces have been determined at room temperature on a polished plate made of steel (S235JR according to DIN 10 025) with a thickness of 10 mm (1kg~10N). A deviation of up to -10% from the specified value is possible in exceptional cases. In general, the value is exceeded. The type of application (installation situation, temperatures, counter anchors, etc.) sometimes influence the forces enormously. The values given are for orientation purposes. Let our experts advise you.